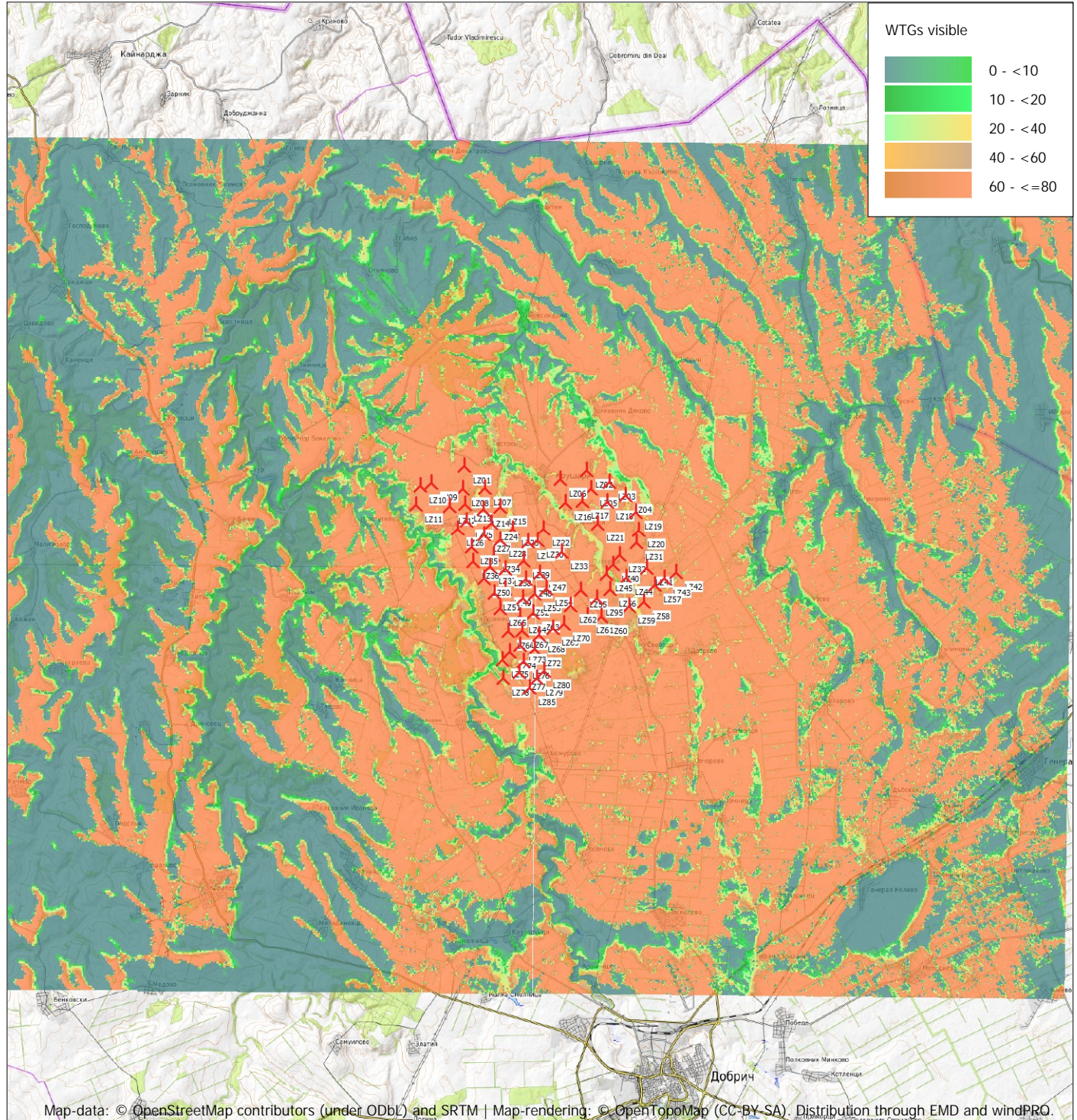


ZVI - Map Standard ZVI summary

Calculation: Model_2_Full Range



0 5 10 15 20 km

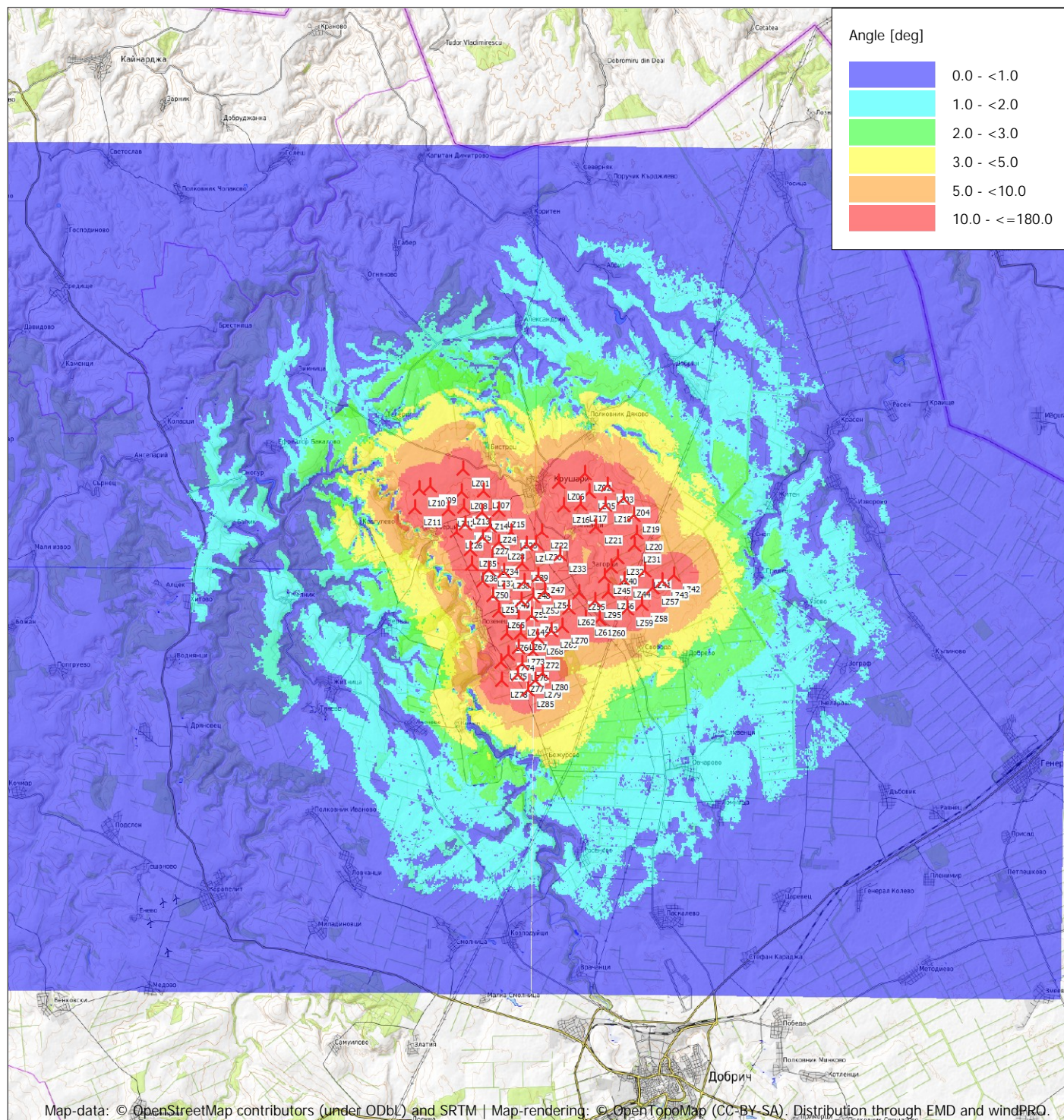
Map: OpenTopoMap , Print scale 1:265,000, Map center Geo WGS84 East: 27.755587° E North: 43.782231° N

New WTG

Grid step: 25 m - Eye height: 1.5 m - Calculation height: Hub height

ZVI - Map Vertical subtended angle

Calculation: Model_2_Full Range



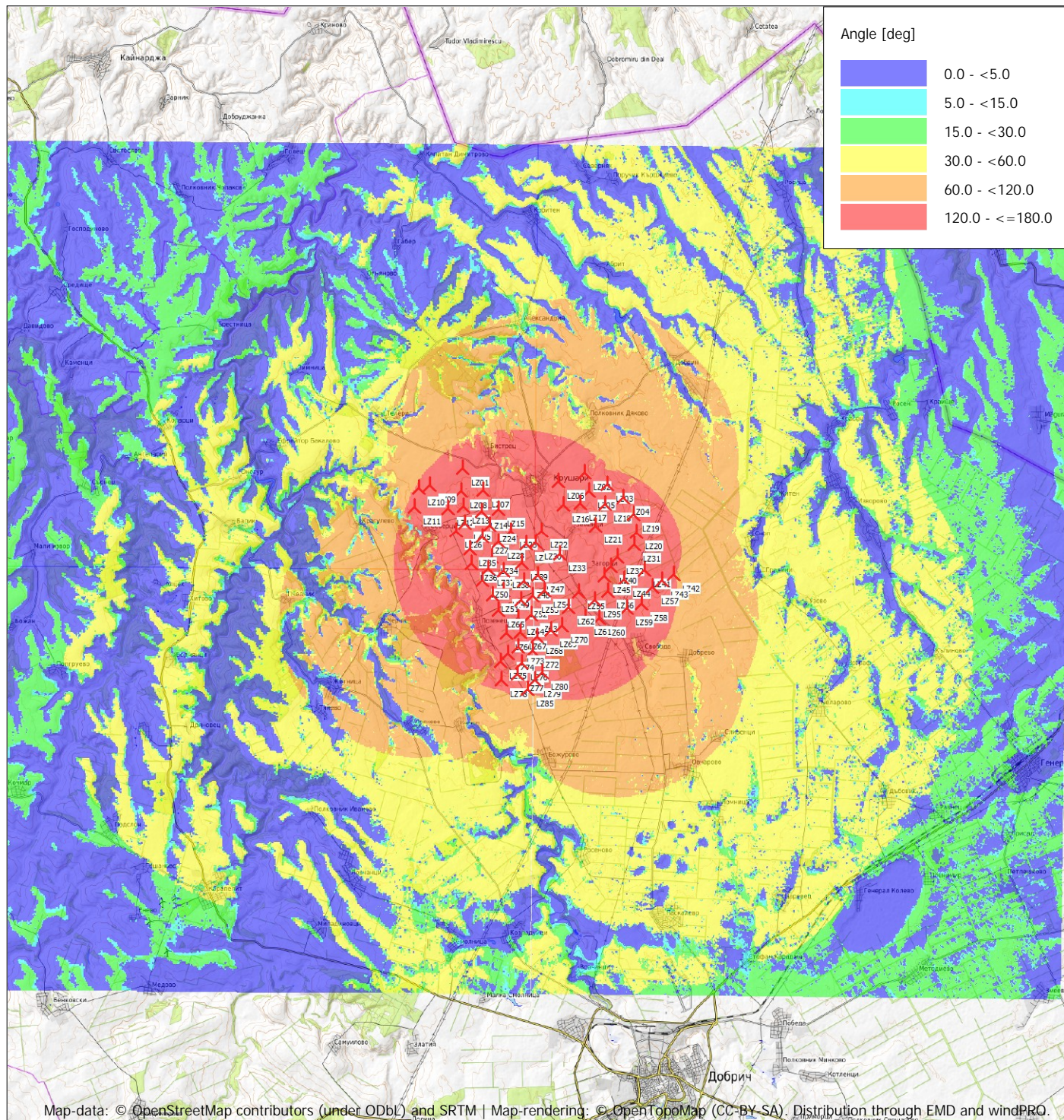
0 5 10 15 20 km

Map: OpenTopoMap, Print scale 1:265,000, Map center Geo WGS84 East: 27.755587° E North: 43.782231° N

New WTG

ZVI - Map Horizontal subtended angle

Calculation: Model_2_Full Range



0 5 10 15 20 km

Map: OpenTopoMap , Print scale 1:265,000, Map center Geo WGS84 East: 27.755587° E North: 43.782231° N

 New WTG